

TandeM @ 24

Engineering Consultancy



Our MISSION

To deliver quality and prompt services to clients, and to train and develop world-class Filipino engineers who are responsible and dependable professionals.

Our VISION

2020 and beyond: A leader among local structural engineering design firms and valued by the industry because of its professionalism, integrity, and passion for the structural engineering profession.

YOUR goal is OUR goal.

We seek to be responsive to your needs and requirements.

5/F One Domini, 1504 D. Oliman St., Makati City ▪ Tel Nos. +632-8966930 & +632-6919707 ▪ Email: tandem.eng@gmail.com

About Us

TandeM Engineering Consultancy is a reliable, responsible, dependable and experienced firm, equipped to meet all a project's structural engineering needs, from schematic to detailed design, construction management, rectification and strengthening, or any other structural engineering requirement or concern. Established in May 1996, TandeM has since accumulated in its portfolio a record of successfully accomplished projects both here in the Philippines and abroad.

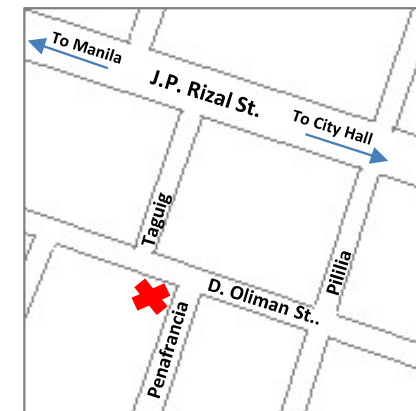
TandeM was started by **Toby Tamayo** and **Miriam Lusica**, a husband and wife team... thus, the name **TandeM**. Both are graduates of the University of the Philippines in Diliman, Quezon City. Both have extensive experience in building analysis and design and both are accredited Specialist Structural Engineers in the Philippines. As TandeM, they offer professional and personalized service. In TandeM, Toby and Miriam, fully supported by technically-equipped engineering staff, specialty consultants, and CAD operators, personally oversee the projects.

Toby and Miriam, each having more than 33 years of experience, began their structural engineering careers with the Structural Division of DCCD Engineering Corporation. In the early 90's, they left for Hong Kong and worked for five years for Wong Pak Lam & Associates (WPL), also a respected structural engineering firm. Then in 1996, they returned to the Philippines to start TandeM, a sole proprietorship registered with the Department of Trade and Industry. Among TandeM's first clients were Toby and Miriam's former employers, DCCD and WPL.

TandeM takes pride in its passionate dedication to the structural engineering profession and believes in nurturing long-term relationships. It is thus not surprising that clients become friends and friends become clients.



Our new home



Map

Our Services

Detailed Structural Analysis and Design

This is Tandem's bread and butter. Tandem offers technical services related to carrying-out complete structural analysis and design of buildings and other structures. The results of our analysis and designs are translated into details and drawings that serve as bases for construction.

Structural Modeling

Tandem engineers have the necessary skills needed to produce analytical structural models using the MIDAS Design Software packages, as well as the Extended Three-Dimensional Analysis for Buildings (ETABS) software. Tandem engineers take part in continuing education and development programs to keep them updated and upgraded in terms of technical skills and know-how.

Structural Investigation and Review

Existing structures, whether fire-damaged, earthquake-damaged, calamity-damaged or simply old, are investigated and assessed in order to establish their structural integrity and adequacy for continued operation. Tandem has the necessary expertise required for such tasks.

Expanded Construction Drawings

Trained under Aidea Philippines, Inc. and TEKLA Software (Finland), a number of our engineers have acquired the necessary skills to produce expanded structural construction drawings, a step higher than the basic Building Information Modeling (BIM). Aside from clash detection, quantity take-offs can be done quickly and accurately, resulting in a more streamlined and efficient design and construction process.

Other services

Aside from those listed above, Tandem also offers services which are related to anything and everything STRUCTURAL. These include the following: Peer Review, value-engineering, restoration / rehabilitation / retrofitting of structures, technical advisory / consultancy, and more.



Our Projects (Partial Listing)

Projects undertaken by Tandem vary in size, type and source... from renovations of local areas in existing buildings, to design of mat foundations, to structural evaluations of existing structures, to reconstruction and renovation of fire-damaged residential homes, to complete detailed engineering designs for both local and overseas projects.

Following is a **partial list** of projects:

□ □ DETAILED STRUCTURAL ANALYSIS AND DESIGN □ □

Overseas Projects as Sub-consultant [Due to Confidentiality Agreements, Clients and detailed description of projects are withheld.]

*In Guam and Marshall Islands

- NAVFAC Projects
- Majuro Hospital Redevelopment

*In U.A.E.

- 4 Storey Building, Approx. Area = 3500 sqm
- 3 Towers (Residential and Commercial), 33 storeys above ground + 3 Basements
- 4 Medium-rise Residential Buildings with 2 basements + 1 Medium-rise Hotel with 2 Basements, Dubai

*In Macau, China

- Casino Hotel, 60 Storeys with 3 Basements

*In Hong Kong

- Autopia, Hong Kong Disneyland
- Ma On Shan (Hong Kong) Roof and Upper Roof Floors of Four Tower Blocks

*In Saigon

- Ramada Hotel (Saigon) Podium Floors (2/F~5/F)

Our Projects (Partial Listing)

□ □ DETAILED STRUCTURAL ANALYSIS & DESIGN □ □

Local Projects

Commercial Structures

- Cloverleaf Mall (Ph 2), (on-going)
- Cloverleaf Mall, Balintawak, Quezon City
- South Park Mall, Muntinlupa City
- Vermosa Mall, Daang Hari, Cavite
- Pontevia Complex, Buildings A,B,C,D. Daang Hari, Las Piñas City for Brittany Land Inc.
- UP Town, Phase 1A and 1B, Diliman, Quezon City
- Tune Hotel Davao
- Boracay Mandarin Grand Waters Resort and Spa, Boracay
- Central Square Cinema, BGC, Taguig City
- Northeast Triangle, BGC, Taguig City
- ETON City Commercial Development Phase 1, Cabuyao, Laguna

Office Buildings

- Bonifacio Stopover, BGC, Taguig City
- BGC Corporate Center, BGC, Taguig City
- South Park BPO, Muntinlupa City
- Bacolod BPO, Talisay, Bacolod City
- ATC-BPO, Alabang, Muntinlupa City

Residential Structures

- Cardea Terraces (DMCI Homes), Antipolo City, Rizal (on-going)
- Oriana Towers (DMCI Homes), Aurora Blvd., Quezon City (on-going)
- Sovanna Towers (DMCI Homes), Pasig City (on-going)
- Viera Residences (DMCI Homes), Quezon City
- Outlook Ridge (DMCI Homes), Baguio City
- Levina, Buildings A, B, C (8-storey MRBs) DMCI Homes, Pasig City
- Infina Towers (DMCI Homes), Quezon City (on-going)
- Calathea Residence (DMCI Homes), Parañaque City
- Commonwealth Buildings 4, 5, 6, 7, 8 (23 storeys each) for Century Limitless
- Alabang Residential Condominium (20-storeys) for GeoEstate

Industrial Structures

- Calaca Fly Ash Plant Expansion (Pozzolanic Phils., Inc.)
- Masinloc Bagging Facility (Pozzolanic Phils., Inc.)

Iconic Structures

- Performing Arts Theater, BGC, Taguig City
- KidZania, BGC, Taguig City

Our Projects (Partial Listing)

□ □ EXPANDED DOCUMENTATION □ □

Building Projects of Japanese Contractors (Outsourced)

Sumitomo Warehouse
Mediacorp Building
Unicharm Building
Yakult Building
Kanagawa Gymnasium
Kioicho Building

Local Projects

Park Terraces, Makati City (Substructure)

□ □ STRUCTURAL INSPECTION/EVALUATION/REVIEW □ □

Mission Hospital, Pasig City
UERM Pay Hospital, Sta. Mesa
UERM Charity Hospital, Sta. Mesa
Eurovilla, Legaspi Village, Makati City
OWWA Center Building, Pasay City
ECC Building, Makati City
Regina Garden I Building, Manila City
Puso ng Maynila Building, Manila City
The Peninsula Manila
Classica Tower, Makati City

Asian Center of Christian Ministries, Makati City
Liroville Condominium, Makati City
Goodland Building, Makati City
Concorde Condominium, Makati City
Shell Magallanes Billboard, Makati City

Our Projects (Partial Listing)

□ □ PROJECT MANAGEMENT □ □

- Repair of Fire-damaged Residence of Ombudsman Simeon Marcelo , Makati City
- Repair of Fire-damaged Residence of Mr. & Mrs. Jun Arenillo, Sta. Mesa, Manila

□ □ TECHNICAL CONSULTING □ □

- Burgos Wind Farm, EDC
- MMUSP Project, Consultant to IDP Consult
- Makati Heritage Project, Consultant to CONCEP, Inc.
- New CNS/ATM Systems Development Project in the Philippines
- BRACE Project for Taguig City, Consultant to CONCEP, Inc.
- Union GalvaSteel Technical Brochure
- Marina Square Renovation, Consultant to Hip Hing Co. Ltd. (HK)
- Concrete-related Concerns of On-going Projects, Consultant to HOLCIM
- MWSI-PhilAqua for South Manila Water Supply Project (Secondary Lines)

Our Clients

Developers and Contractors

- Ayala Land Inc. (ALI)
- Century Limitless
- DMCI Property Developers Inc. / DMCI-Homes
- Fort Bonifacio Development Corporation (FBDC)
- Makati Development Corporation (MDC)
- GeoEstate
- Stores Specialists, Inc.

Architects and Engineering Consultants

- AIDEA Philippines
- Rchitects, Inc.
- Casas + Architects
- CONCEP, Inc.
- ENDEC, Inc.
- Phil Koei
- DCCD Engineering Corporation
- Wong Pak Lam & Associates (HK)
- Khatib & Alami (Dubai)
- EMPSCO (Guam)

Office Personnel

Engineering

Principal Engineers

CHRISTOPHER PAULO T. TAMAYO
MIRIAM LUSICA-TAMAYO

Supervising Engineers

DINA A. TERNIDA
CHRISTOPHER KEN CALIGUIRAN

Design Engineers

ALDREN P. UCAG
CHRISTOPHER L. MIMAY
KRITZ ALBELAR
JESSICA GRACE L. CHAVEZ

Junior Engineers

CESAR P. MALENAB JR.
HANNA MAE VILLAMON
DENNIEL STEVEN SY
KENT SALAMAT
THERESE ANNE LIM
AARON ACORITAY

*** ALL ENGINEERS ARE LICENSED CIVIL ENGINEERS.**

Support

Production (Augmentation)

MA. SHIELA GAAD

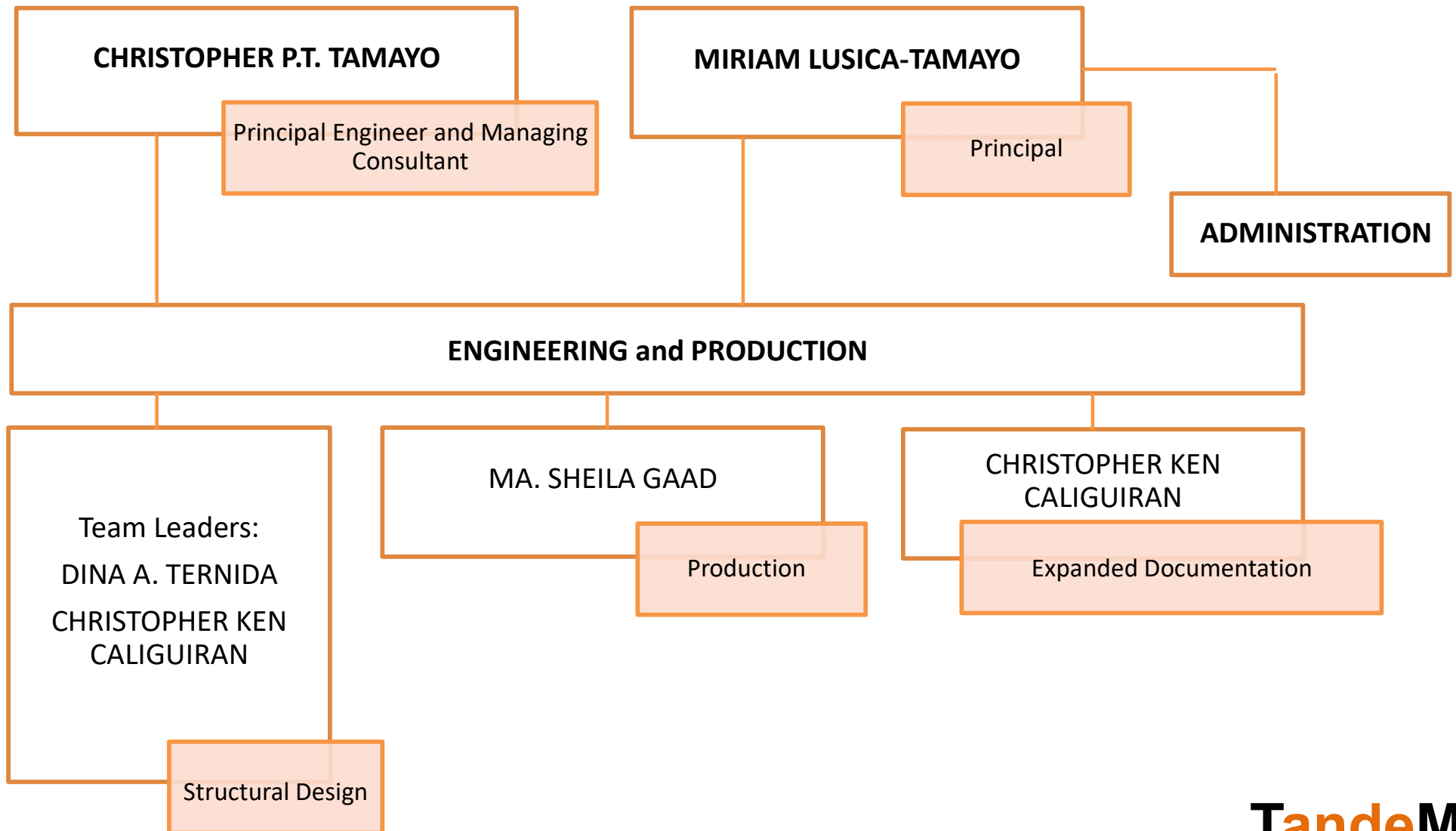
Administration

RONALYN COLLANTES
MICHAEL CRUZ
ISAGANI CANCINO

Accounting

ELVIRA DE LEON
CHRISTINE CATARROJA

ORGANIZATIONAL CHART OF KEY PERSONNEL





CHRISTOPHER P.T. TAMAYO

“TOBY”

GENERAL QUALIFICATIONS:

Over thirty three (33) years of experience in Structural Engineering Design of Multi-story and Multi-purpose Building Developments.

WORK EXPERIENCE:

Since May 1996, Toby has been the main force behind Tandem, being the Proprietor and Managing Consultant of the firm. He serves as a Consultant to projects in the Philippines as well as overseas projects (e.g. Hong Kong, Macau, United Arab Emirates, Republic of Marshall Islands, and Guam, U.S.A.). Prior to Tandem, Toby was connected with Wong Pak Lam & Associates (1991-1996) and DCCD Engineering Corporation-Structural Division (1988-1991).

EDUCATION:

Toby is a graduate of the University of the Philippines (UP Diliman), B.S. Civil Engineering (1987).

PROFESSIONAL SOCIETIES:

- Incumbent President, Philippine Institute of Civil Engineers – Makati Chapter (PICE- Makati Chapter)
- Incumbent Director and Secretary, Institution of Specialist Structural Engineers of the Philippines (ISSEP)
- Past President, Association of Structural Engineers of the Philippines (ASEP; 2007-2008); ASEP Fellow
- Member of the ProjectSAM-PH: *Enhancement of the Probabilistic Seismic Ground Motion Hazard Maps for the Entire Philippines*
- Secretary, Association of Accredited Consultant CE of the Philippines (AACCEP)
- President, I.PROVE Global Inc.

PROFESSIONAL RECOGNITION:

- Registered Civil Engineer, Professional, License Certificate No. 54405. 1988.
- PICE-recognized Specialist in Structural Engineering, StE No. 16, December 2001.
- DOLE-certified Safety Officer, Construction Occupational Safety and Health, 2011.
- Awardee, ASEP 50 Most Outstanding Structural Engineers (OSE), 30 September 2011.
- Awardee, 2016 UPAE Professional Degree Award for Civil Engineering, 12 November 2016.
- Philippine Green Building Initiative (PGBI) - GREEN Accredited Design Professional (ADP) + Accredited Assessor (AA), 05 September 2020

PROJECT INVOLVEMENT (Partial list):

- Engineer-of-Record: Cardea Terraces, Antipolo City, Rizal [4B+43 storeys, 1 tower] – ongoing
- Engineer-of-Record: Oriana Towers, Quezon City [6B+51 storeys, 2 towers, Aurora Blvd. Quezon City] – ongoing
- Engineer-of-Record: Sovanna Towers, Buting [42 storeys, 2 towers, on piles] - ongoing
- Engineer-of-Record: Infina Towers, Quezon City [5B+42 storeys, 2 towers, Quezon City] – ongoing
- Engineer-of-Record: The Amaryllis Residential Structure, Quezon City [26- Storeys with 4 Basements]
- Engineer-of-Record: The Viera Residences, Scout Tuazon, Quezon City [30-Storeys with 4 Basements]
- Engineer-of -Record: Bonifacio Stopover (BPO + Mall), ESB-BGC, Fort Bonifacio Global City [25-Storeys with 2 Basements]
- Engineer-of-Record: Northwest Building, East Super Block BGC, Fort Bonifacio Global City [7-Storeys with 2 Basements]
- Engineer-of-Record: The Maybank Headquarters, East Super Block BGC, Fort Bonifacio Global City [7-Storeys with 1 Basement]
- Engineer-of-Record: Northeast Triangle Building, Fort Bonifacio Global City [4-Storeys with 1 Basement]
- Engineer-of-Record: University Town Phase 1a and 1b, Diliman Quezon City [2 to 5 Storey buildings]

Tandem
Engineering Consultancy



MIRIAM LUSICA-TAMAYO

GENERAL QUALIFICATIONS:

Over thirty-four (34) years of experience in Structural Engineering Design of Multi-story and Multi-purpose Building Developments.

WORK EXPERIENCE:

Miriam started her career in Structural Engineering in 1987 with the Structural Division of DCCD Engineering Corporation. From 1991-1996, she worked as a structural engineer for Wong Pak Lam & Associates, Ltd. in Hong Kong. In May 1996, she returned to Manila and together with her husband, started Tandem Engineering Consultancy.

EDUCATION:

Miriam is a graduate of the University of the Philippines (UP Diliman) of both M.S. Civil Engineering, Major in Structures (1997) and B.S. Civil Engineering (1986). Presently, she is completing her dissertation for a PhD in Civil Engineering-Structural in UP Diliman.

PROFESSIONAL SOCIETIES:

ASEP. Miriam is a Past President of the Association of Structural Engineers of the Philippines and is the incumbent Chancellor of the ASEP College of Fellows. She is the first and to-date, the only lady President of ASEP.

PICE. She is a Past President of the Philippine Institute of Civil Engineers, Makati Chapter (PICE-Makati). On a national scale, Miriam was a member of the PICE National Board several times, as a National Director and as National Treasurer for 2 separate terms. She used to head the PICE National Committee on Earthquake Quick Response Program (EQRP) and the Committee on Disaster Mitigation, Awareness and Preparedness Strategies (DMAPS).

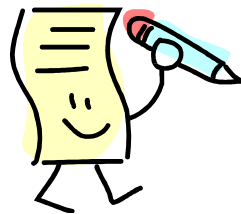
ISSEP. Miriam is the incumbent Treasurer of the Institution of Specialist Structural Engineers of the Philippines.

PROFESSIONAL RECOGNITION:

- Awardee, ASEP 50 Most Outstanding Structural Engineers (OSE), 30 September 2011; the only female recipient
- Awardee, 75 Most Outstanding Filipino Civil Engineers, PICE National's 75th anniversary, 2012; one of only 2 female recipients.
- Registered Civil Engineer, Professional, License Certificate No. 50140. 1986.
- PICE-recognized Specialist in Structural Engineering, StE No. 15, December 2001.
- DOLE-certified Safety Officer, Construction Occupational Safety and Health, 2011.

PROJECT INVOLVEMENT (Patial list):

- Structural Consultant, NSCR-Ex TOD for CONCEP, Inc.
- Project Manager, The Big One Phase 8 , for EHSEC.
- Structural Consultant, OWWA
- Engineer-of-Record, Cloverleaf Mall Ph 2 for Ayala Land, Inc./MDC
- Engineer-of-Record, Cloverleaf Mall Ph 1 for Ayala Land, Inc./MDC
- Engineer-of-Record, Miriam College Nuvali Building 2
- Engineer-of-Record, Calathea, Paranaque for DMCI Homes
- Engineer-of Record, Lot 7 Project (23 storeys above ground with 3 basements) in Bonifacio Global City, Ayala Land Inc.
- Engineer-of-Record, Buildings 4, 5, 6, 7, 8 (23-storey buildings) and Clubhouse, Commonwealth Project for Century Limitless.
- Engineer-of-Record, Boracay Mandarin
- Engineer-of-Record, Levina Place, 3-medium rise buildings, 7-8 storeys each, Pasig City, for DMCI Homes
- Engineer-of-Record, Flair Towers (2 towers, 42 storeys plus 4-5 basements) for DMCI Homes, under AMH Philippines
- Engineer-of-Record, Pontevia Buildings A, B, C with common Promenade and Central Piazza, for Brittany (Vista Land Company)
- DPWH Bridges for EHSEC Corp.
- BRACE Project Taguig City, AusAID
- ADB Consultant, ADB JFPR Component C1
- Various Dubai/Abu Dhabi Bldgs
(covered by Confidentiality Agreements)



Contact us

Website : www.tandem.com.ph
Email : tandem.eng@gmail.com
Telephones : (02)8896-6930; (02)8691-9707
Mobile : 0917.857.6363, 0917.501.6362, 0920.904.0317
Mailing Address : 5/F, One Domini, 1504 D. Oliman St., Santiago Village,
Brgy. Valenzuela, Makati City, 1208